

[View this email in your browser](#)



## Dear JRT Community,

The Just Rural Transition team is following the war in Ukraine with a shared and heartfelt sadness. We join calls from the UN Secretary-General and others for an end to Russia's military operations and a restoration of peace. This grave situation reminds us that conflict is one of the key drivers of hunger and is, unfortunately, occurring in many other places across the world as well.

Food systems are already facing immense challenges with the cumulative impact of climate and nature crises, the coronavirus pandemic, and conflict. Ukraine is the world's fifth largest exporter of wheat, and Russia produces a number of key ingredients used in fertilizers. Malnutrition and hunger were already on the rise, and this current conflict will exacerbate those trends, with the consequences falling on the poorest and most vulnerable.

In light of the humanitarian crises in Ukraine, Afghanistan, Ethiopia, Yemen, South Sudan, Nigeria, and elsewhere, we continue our efforts to alleviate hunger and food insecurity by working towards more equitable, sustainable, and resilient food systems.

Our vision remains for a globally just transition where no one is left behind.

Sincerely,

JRT Secretariat

---

## You're invited to the JRT Community Dialogue!

It is our pleasure to invite you to our upcoming March Community Dialogue!

[Register for the event here!](#)

## Join our Community Dialogue

**Thursday, 31 March 2022**

09:00 - 10:30 EDT

14:00 - 15:30 BST

15:00 - 16:30 CEST



This is an opportunity for all members of the Just Rural Transition community to come together, share news, and exchange ideas. We will provide an overview of our 2022-23 strategy, outline ways for you to get involved, and hear from the community on key priorities and activities for the year.

During the dialogue, we will host **four breakout sessions** around the levers of change to achieve a just rural transition.

1. Policy Action
2. Investment Partnerships
3. Land Tenure, Gender Equity, and Social Inclusion
4. Knowledge Products, Communications, and Events

You can find more details about what will be discussed in each session in this newsletter.

We encourage multiple representatives from your organisation to attend the dialogue and join the breakout session most relevant to their work. Please indicate which breakout session you would like to join in the [registration form](#).

We aim to make all of our events as inclusive as possible. If you would like interpretation to support your participation in this event, kindly indicate this in the form as well.

We hope to see you there!

**Register for the Community Dialogue!**

---

## Policy Action

This year, JRT Policy Action is focused on three priorities. First, we are aiming to **build global momentum** for repurposing public support to food and agriculture. One way we are doing this is by making a case for the importance of the 'repurposing agenda' in global convenings such as the G7, the Convention on Biological Diversity's post-2020 Global Biodiversity Framework, and COP27.

Second, we are helping to **accelerate country-level progress** on the repurposing agenda. A principal focus here will be designing workshops to explore and amplify the perspectives of both food producers and senior technical officials (two key stakeholder groups) on repurposing challenges.

helping to connect policymakers with the analytical resources they need to make evidence-based decisions, and catalysing new partnerships and initiatives to develop those resources where they aren't yet available. Driving progress across these priorities is the **Working Group on Repurposing Public Support to Food and Agriculture**, chaired by Melissa Pinfield and Shenggen Fan.

For further details, contact Christian Man, Policy Action Lead, at [pac@merid.org](mailto:pac@merid.org).

---

## Investment Partnerships

In 2022, JRT Investment Partnerships will continue to explore the role of small- and medium-sized **agricultural enterprises** (agri-SMEs) as key drivers of equitable livelihoods in agricultural value chains—including in the Great Green Wall region and in other strategic countries—through its **Agri-SME Investment Platform**, co-hosted with WBCSD. This will include a series of country-specific deep dives, building on the **Shea Deep Dive** work from last December. Other areas of focus include working with businesses to ensure **living incomes** across the supply chain, advancing the regional implementation of the **soil investment** guidelines which JRT supported the development of in 2021, and exploring how social impact metrics can be better incorporated into financial decision-making to drive investment towards a just rural transition.

We continue to support the **Good Food Finance Network** (GFFN), which aims to mobilise the public and private sector financial communities to contribute to sustainable and equitable food systems. The Good Food Finance Week on 25-29 April will kick off with a Good Food Finance Leaders Dialogue, which will focus on catalyzing good food finance to address COVID-19, climate change, and conflict-related risks. Several workshops discussing the key catalyzing levers for food finance will also take place throughout the week. More details will follow soon on the **GFFN website**.

For further details, contact Victoria Crawford, Investment Partnerships Manager, at [crawford@wbcsd.org](mailto:crawford@wbcsd.org).

---

## Land Tenure, Gender Equity, and Social Inclusion

Over the next year, the JRT aims to help elevate land tenure security and its intersections with gender justice and Indigenous Peoples and local community rights within the global food systems agenda, as well as ensure that our Policy Action and Investment Partnership activities reflect their connections to these critical issues.

We are currently scoping a multi-stakeholder consultation process aimed at engaging the investor community to help articulate the case for why securing land rights is critical for de-risking investment in sustainable food systems. We invite JRT community members with relevant expertise to input into this process or join our expert **Working Group on Land Tenure, Gender Equity, and Social Inclusion**.

For further details, contact Hanna Khalil at [hkhalil@merid.org](mailto:hkhalil@merid.org).

## IPCC Report

The latest IPCC report findings make it clear that climate change has already had profound impacts on people and the planet, especially on marginalised and vulnerable communities who are farming on the frontlines. Critically, the risks of extreme impact are more severe than previously recognised. We must act now to transition towards more sustainable, resilient food systems.

The Working Group II Sixth Assessment report underscores that severe impacts resulting from climate change have substantially increased since the IPCC's previous assessment in 2014. These impacts include reductions in food production, water security, and the well-being of all forms of life on our planet. Sudden losses in food production and access to healthy, nutritious diets have increased levels of malnutrition around the world, particularly for Indigenous Peoples and rural communities. Extreme weather conditions due to climate change are similarly causing social and economic impacts that destabilise supply chains and livelihoods.

But there is still hope on the horizon. The IPCC report suggests a wide range of adaptation options available to reduce the risks to nature, health, and well-being. Worldwide uptake of effective options—such as community-based adaption, agroforestry, and farm and landscape diversification—can combat climate challenges together with enhanced public policies, repurposed support, and scaled finance.

Fundamentally, we need integrated, multi-sector solutions that address social inequities and differentiate responses based on climate risk and local situations to enhance food security and nutrition. The JRT Community is supporting Indigenous Peoples and rural communities, policymakers, and the private sector, but we will all need to work together to achieve a just rural transition. The evidence is clear; now is the time for action.

[Read the full report](#)

---

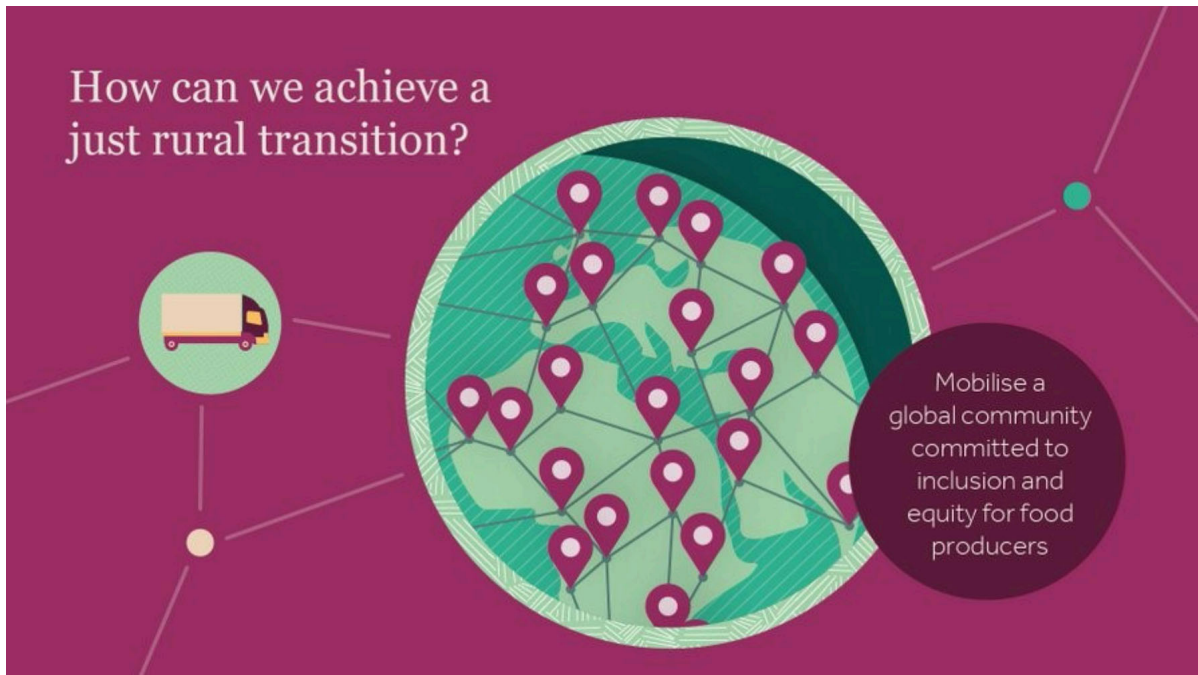
## Communications

Remember to take a look at the [Just Transition 2030 Toolkit](#)! We developed this digital toolkit so that anyone can show their support for a just rural transition and the need to place justice, equity, and rural livelihoods at the centre of efforts to transform food systems.

Our toolkit contains template posts for social media channels along with a range of shareable assets including an explainer video, infographics, and quote cards from food producers outlining and supporting the concept of a just rural transition.

[Discover the JRT Toolkit](#)

Share the toolkit with your communications team or post our templates on your own social media channels using the hashtag #JustTransition2030



## Community Updates

Our community continues to grow! We would like to welcome:

- **Husk Power Systems**, a rural energy services company that provides sustainable and scalable energy to communities in Africa and Asia.
- **Sustainable Beekeeping and Human Development** (SuBeHuDe), an organisation protecting landscapes and promoting biodiversity in Tanzania.
- **Rural Resilience and Transformation**, a youth-focused group in Kenya working for agricultural and environmental conservation.

The **JRT Vision Statement** remains open for endorsement by governments and other key stakeholders. Endorsers will join the growing JRT Community to promote learning, build momentum, and forge new partnerships to accelerate just rural transitions around the world.

To get involved, please [submit an application](#) or contact the JRT Secretariat for more information at [jrt@merid.org](mailto:jrt@merid.org).

# Stay in touch



*Copyright © 2021 Just Rural Transition, All rights reserved.*

Want to change how you receive these emails?

You can [update your preferences](#) or [unsubscribe from this list](#).